

ALLEGHENY CITY CENTRAL

ALL TOGETHER. DIFFERENT.



MASTER PLANNING SUMMARY

July 14th, 2014
(Meeting #4)



This project was funded by the Pittsburgh
Neighborhood Renaissance Fund
with support from the Mayor's Office,
the Urban Redevelopment Authority, and the
Department of City Planning.

It is administered by the Design Center through its
Design Fund Program.



ALL TOGETHER. DIFFERENT.

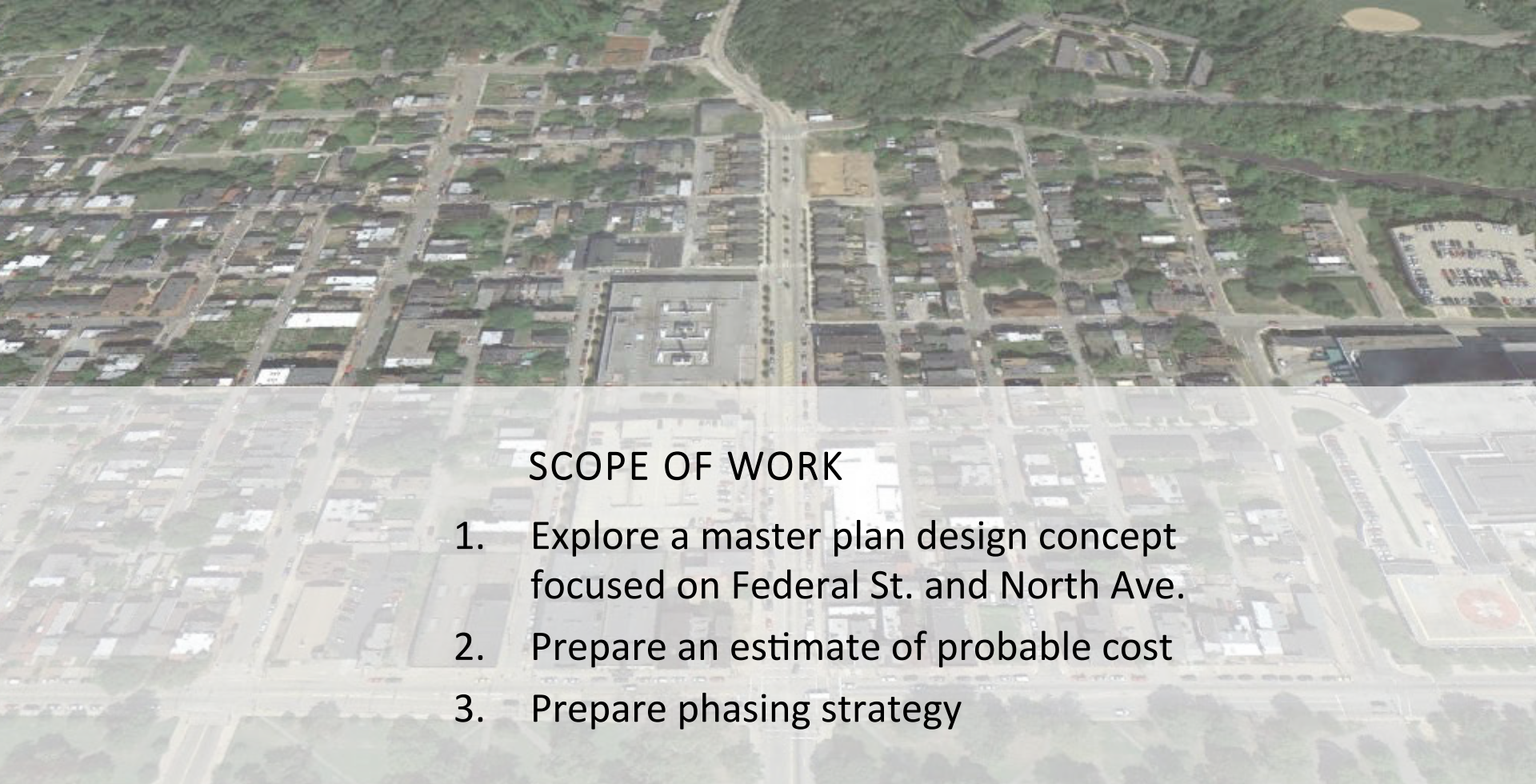




AGENDA

1. Scope of Work
2. Focus Area
3. Master Planning Process
4. Recommended Master Plan
5. Master Planning Elements
6. Community Input
7. Design Consults (By the Design Center)





SCOPE OF WORK

1. Explore a master plan design concept focused on Federal St. and North Ave.
2. Prepare an estimate of probable cost
3. Prepare phasing strategy



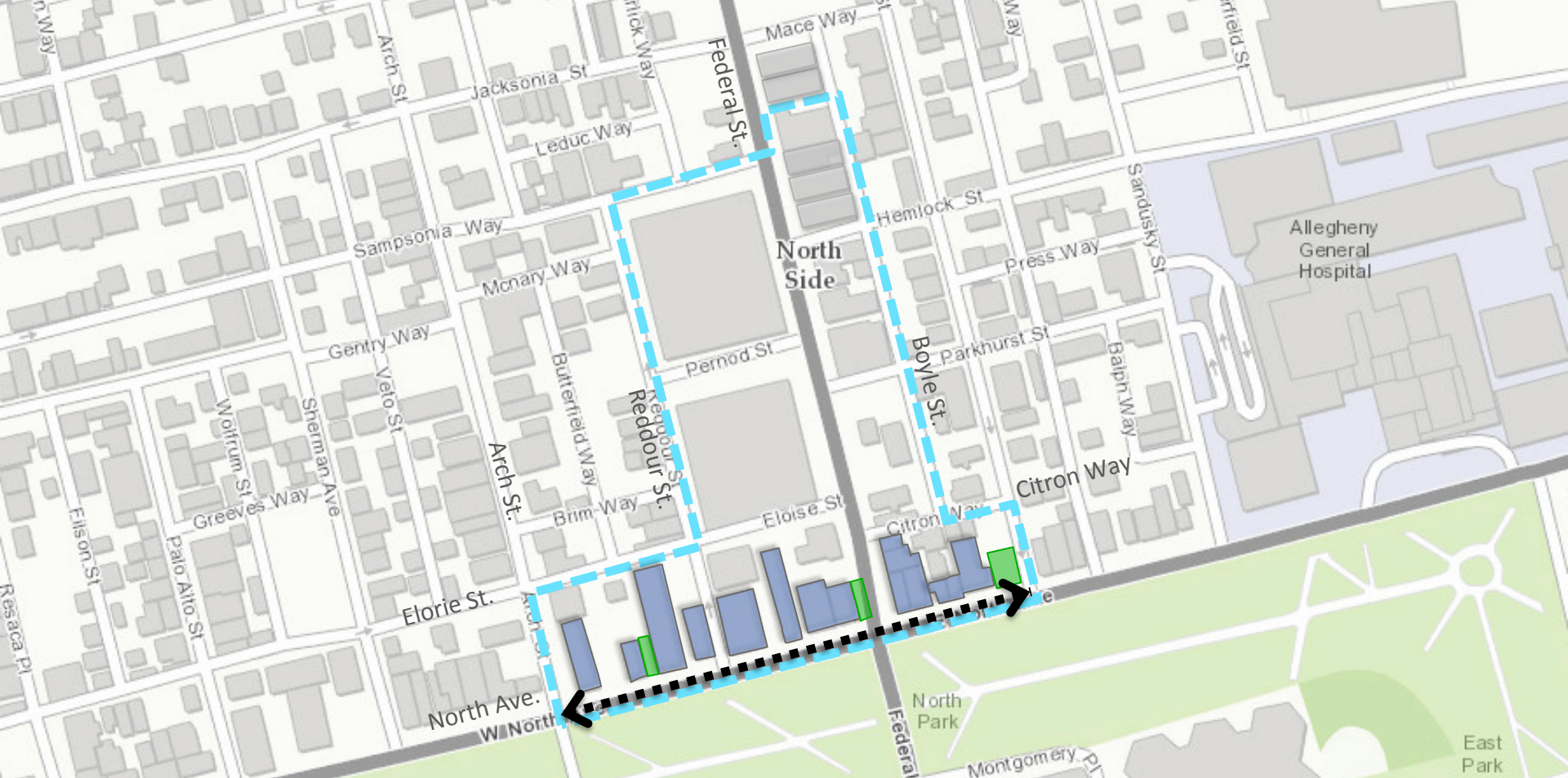


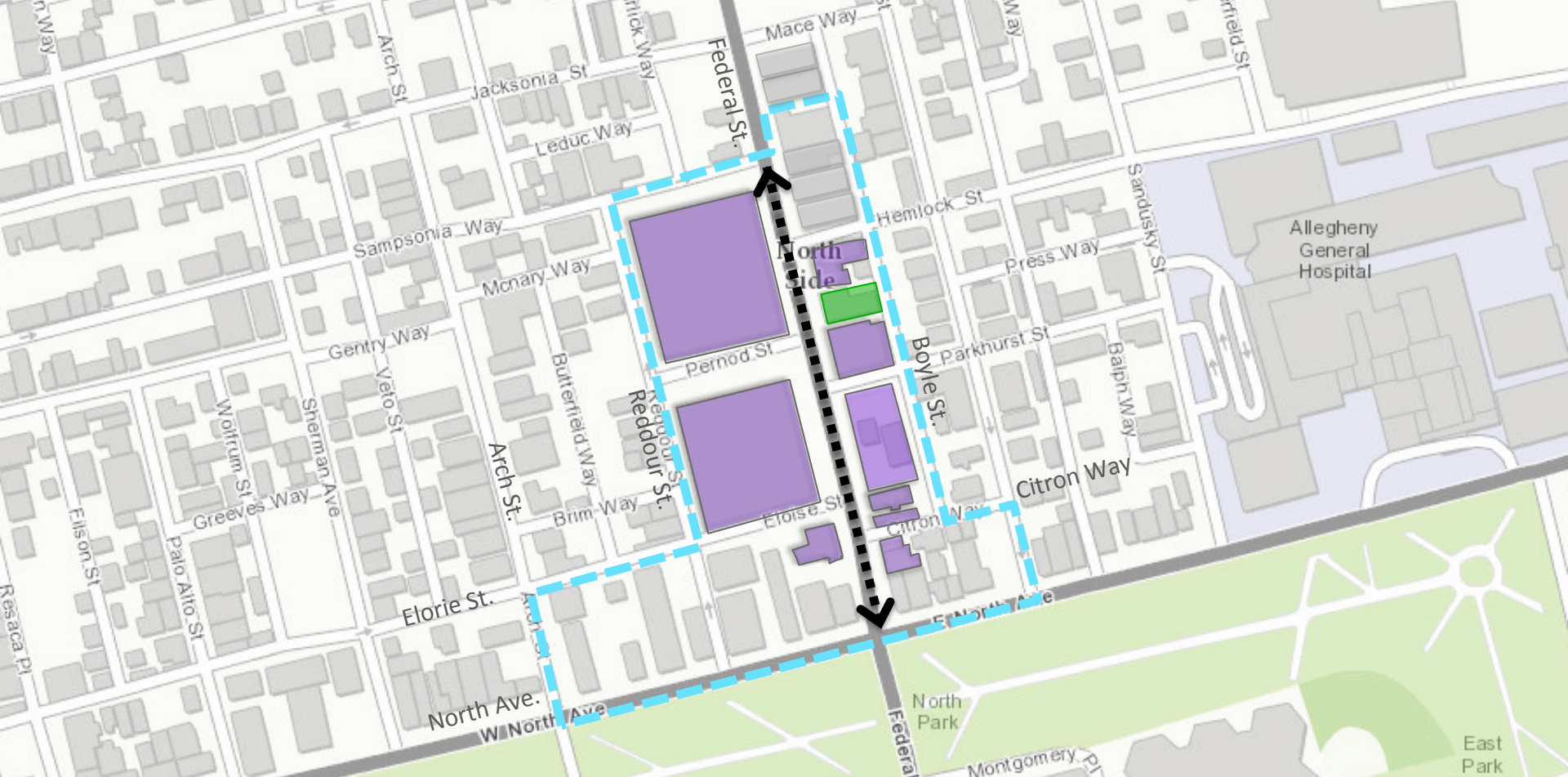
LNC:
Local Neighborhood
Commercial

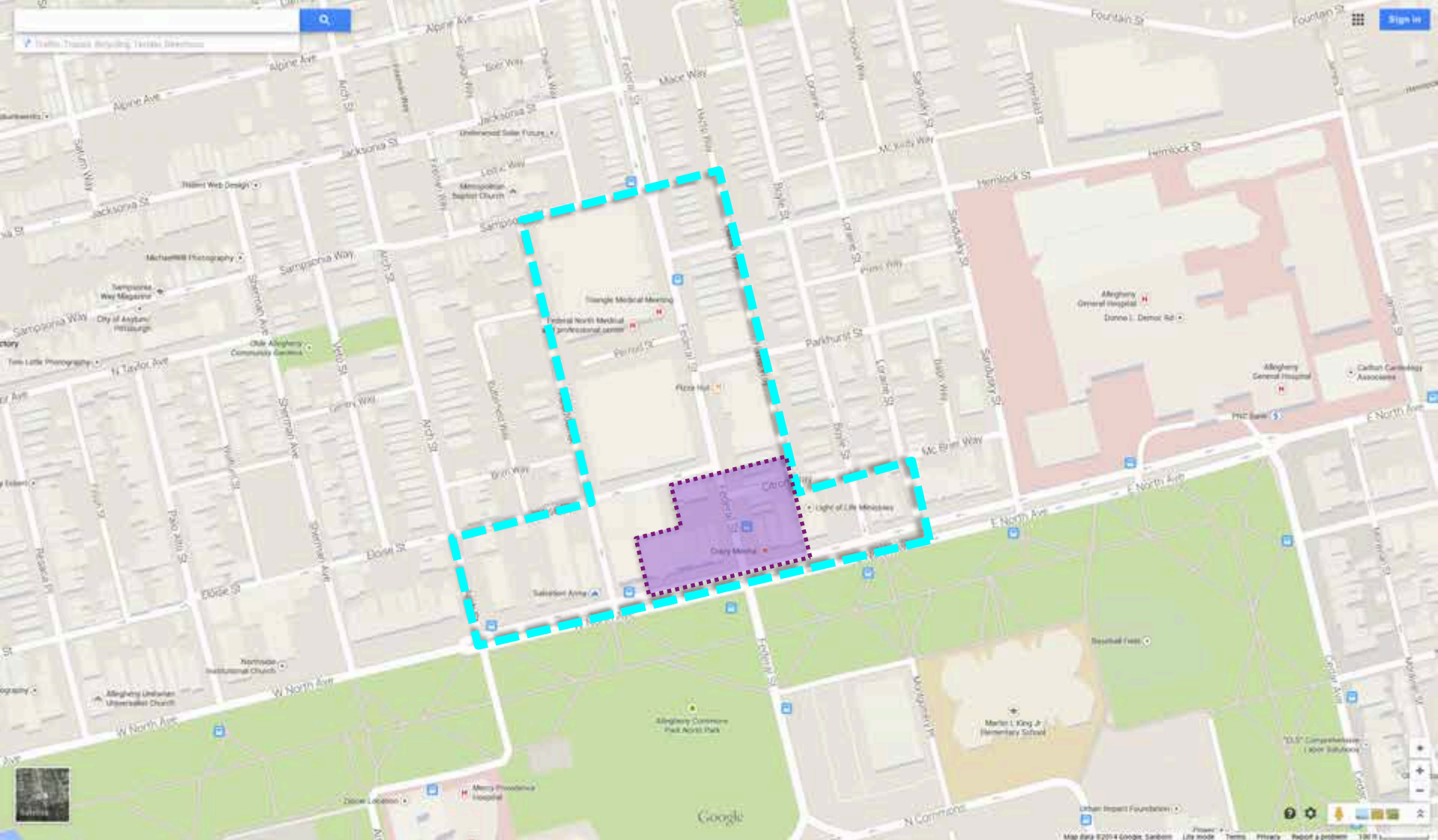


Master Plan Focus Area

SITE ANALYSIS







Master Plan Focus Area



North Ave & Federal St. Intersection
Detailed Design and Planning

What makes a place
a 'Place'?

ALL TOGETHER. DIFFERENT



Access

- Easy to cross the street
- Accommodating sidewalks
- Multiple transportation options

Community

- Sociability - People are inclined to gather
- Sense of community pride/ownership
- Presence of all age groups

Comfort

- Community identity is reflected
- Seating, lighting, trees, signage, etc.
- Spaces designed to pedestrian scale

Activities

- Reasons to linger
- Ground floors - welcoming to passers-by
- Mix of restaurants, stores and services





Concept 1 – Crosswalks, curbing, sidewalk paving, paved bump outs, green infrastructure, raised planters, seat walls, awnings



Concept 2 – All elements of Concept 1 plus vacant corner lot upgrade with neighborhood map & green trellis art wall



Concept 3 – Similar to Concept 1 with neighborhood identity elements (art, stoops, etc.) and additional green space at the bump outs & vacant lot



Concept 4 – Crosswalks, curbing, sidewalk paving, paved bump outs, raised planters, limited green infrastructure with street trees, signalization upgrades, awnings



INTERSECTIONS

- 1 Crossing zone
- 2 Crosswalks
- 3 Traffic Calming - Curb bump outs
- 4 Signalization

SIDEWALKS

- 5 Sidewalks - Upgraded paving
- 6 Raised pots / planters
- 7 Planting beds

INFRASTRUCTURE

- 8 Underground utilities & sewers
- 9 Lighting

GREEN INFRASTRUCTURE

- 10 Street trees & bioretention
- 11 Storm Bio infiltration & collectors
- 12 Flower baskets

BUILDINGS

- 13 Update facades
- 14 Awnings

BIKE / BUS RELATED ELEMENTS

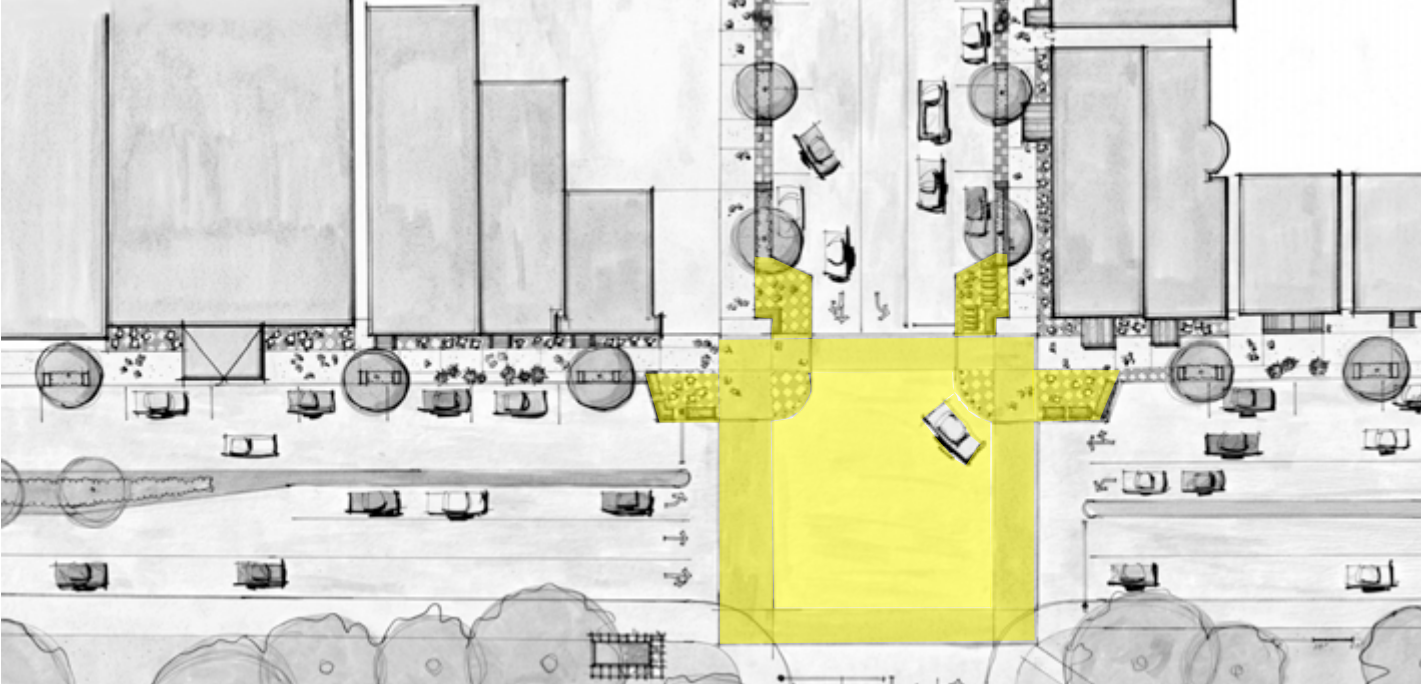
- 15 Bike racks & bike share location
- 16 Bike / bus stop greening station

ART

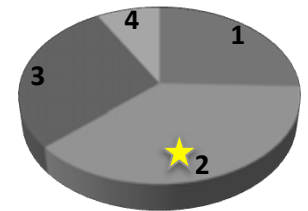
- 17 Art crosswalk
- 18 Wayfinding & signage
- 19 Stoops
- 20 Vacant lot fencing

SITE FURNISHINGS

- 21 Site Furniture built-in
- 22 Site Furniture building owners



1. CROSSING ZONE
- ★ 2. CROSSWALKS
3. TRAFFIC CALMING-
Curb Bump Outs
4. SIGNALIZATION

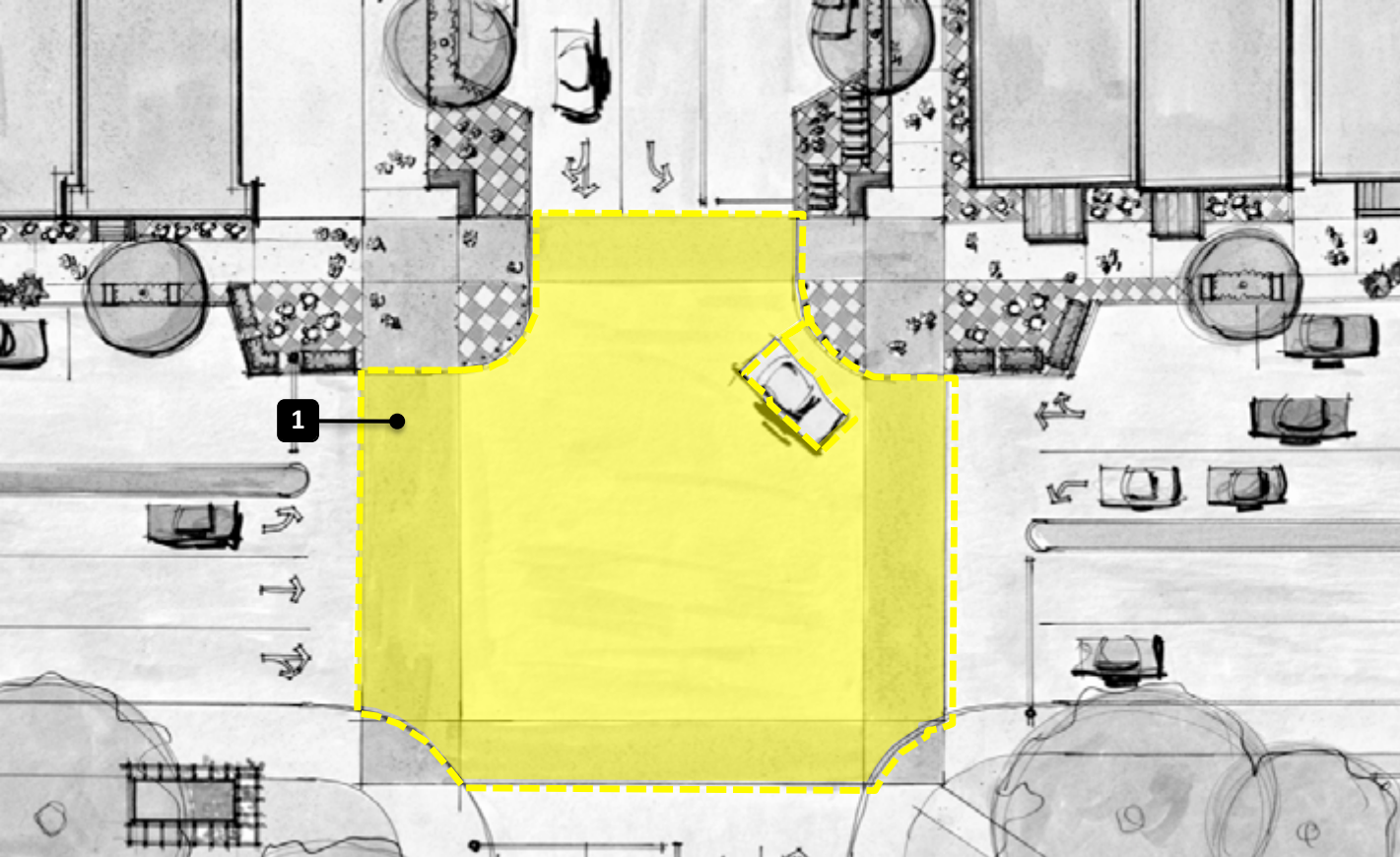


Priority results from Steering Committee



Existing Intersection of North & Federal





1. CROSSING ZONE

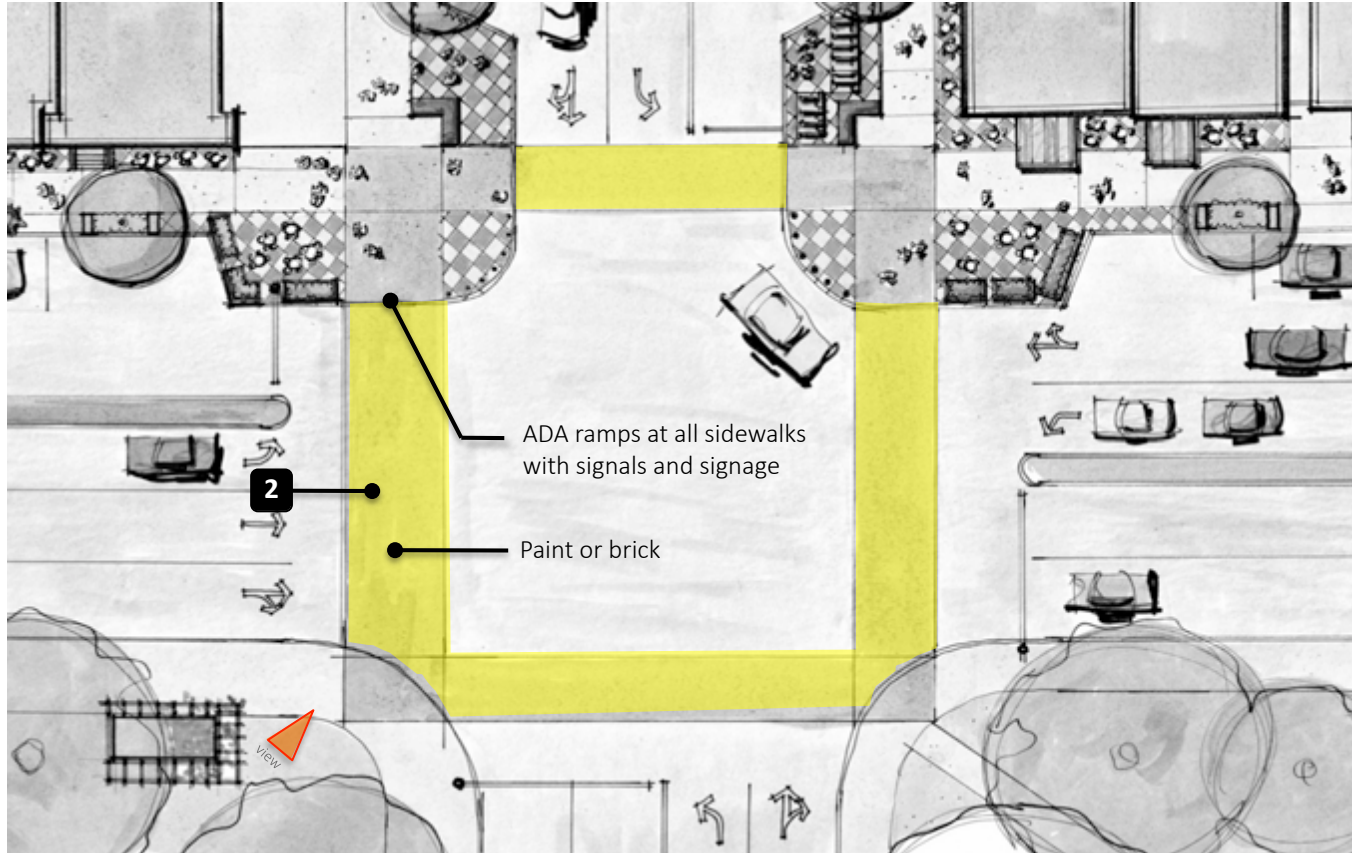
Scope of work would include:

- Specialty paving within crossing zone

Changing color, pattern, texture of the intersection raises visibility to the motorist and raises awareness for the pedestrian on when and where they will cross the intersections.

Narrowing the street by increasing (bumping out) the curbs reduces crosswalk distances, which in turn reduces the amount of time pedestrians are exposed to traffic, according to the Institute of Traffic Engineers.





2. CROSSWALKS

Scope of work would include:

- Painted 'piano keys' or brick inlay
- ADA ramps into sidewalks
- Crosswalk signals & signage

Painted piano keys safely outline the space reserved for those walking.

Clearly communicate to cars their boundaries.

Cobblestones or pavers before the painted bars — alert drivers that they should come to a stop



Designates priority item



Existing Intersection of North & Federal



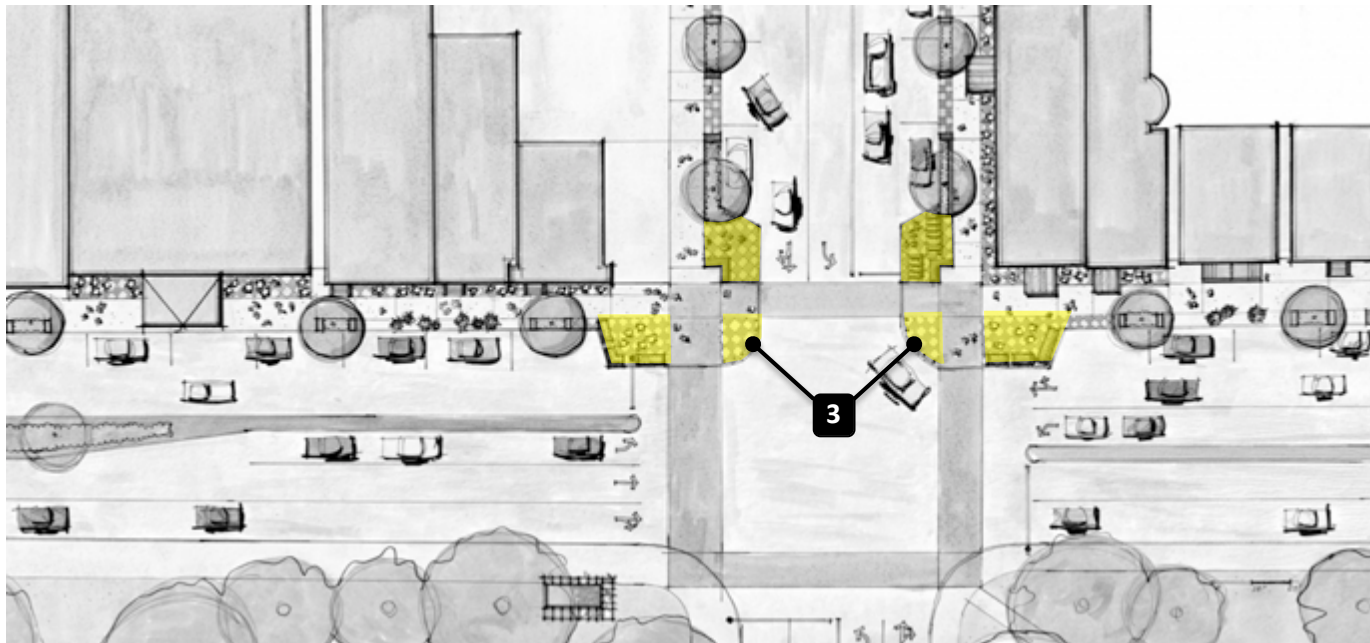
3. TRAFFIC CALMING

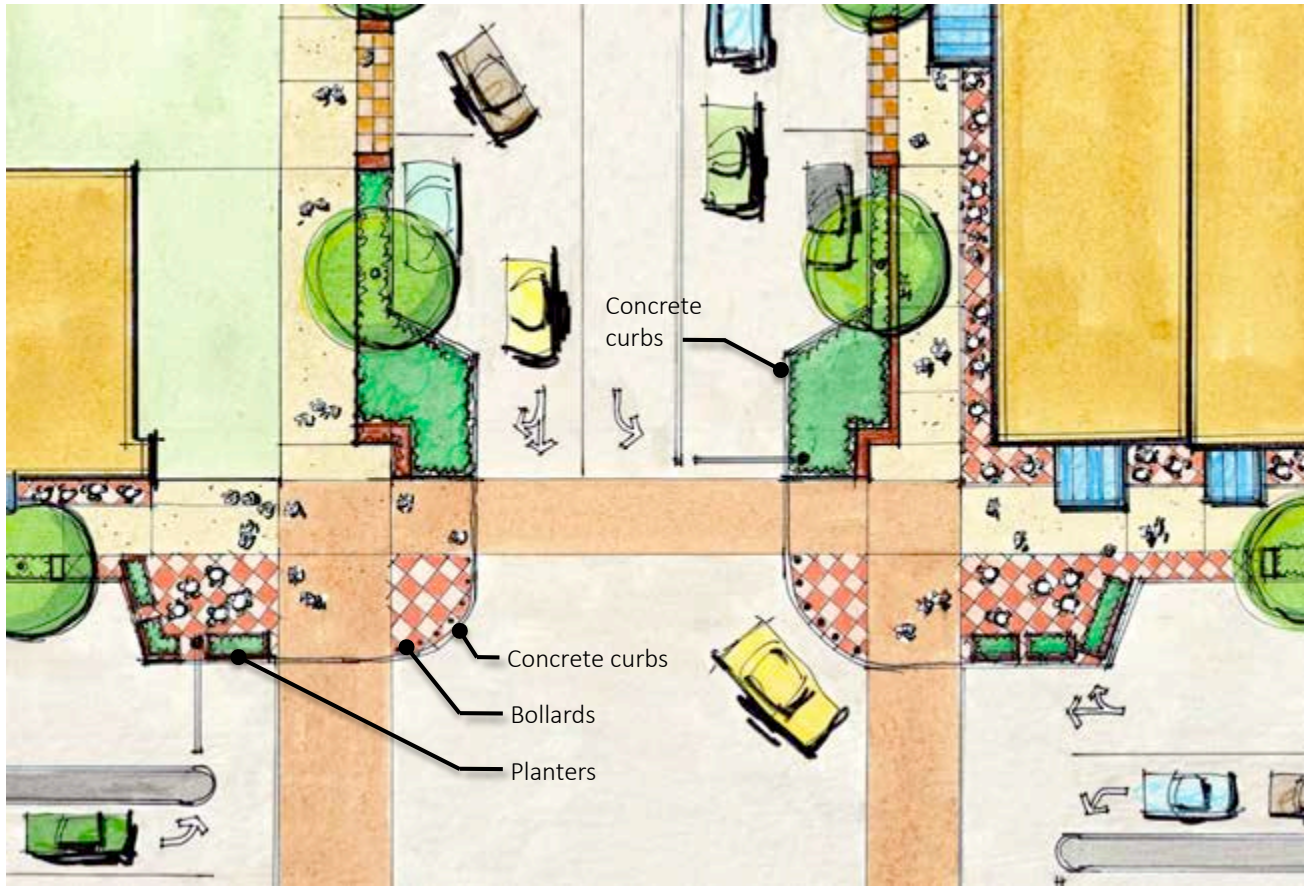
Curb Bump Outs:

Distinctive crosswalk markings and bumps outs – paved or raised planters that jut out into the streets, give pedestrians more space on the sidewalk and provide better visibility for oncoming traffic. Aside from the street safer, the new planters / paved space could serve as outdoor meeting or social space.

Advantages: Narrowing the street by increasing (*bumping out*) the curbs reduces crosswalk distances, which in turn reduces the amount of time pedestrians are exposed to traffic.

Disadvantages: Smaller radius for truck, bus & fire trucks, modification of the storm water flows.





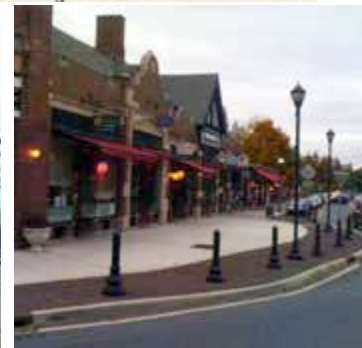
3. TRAFFIC CALMING

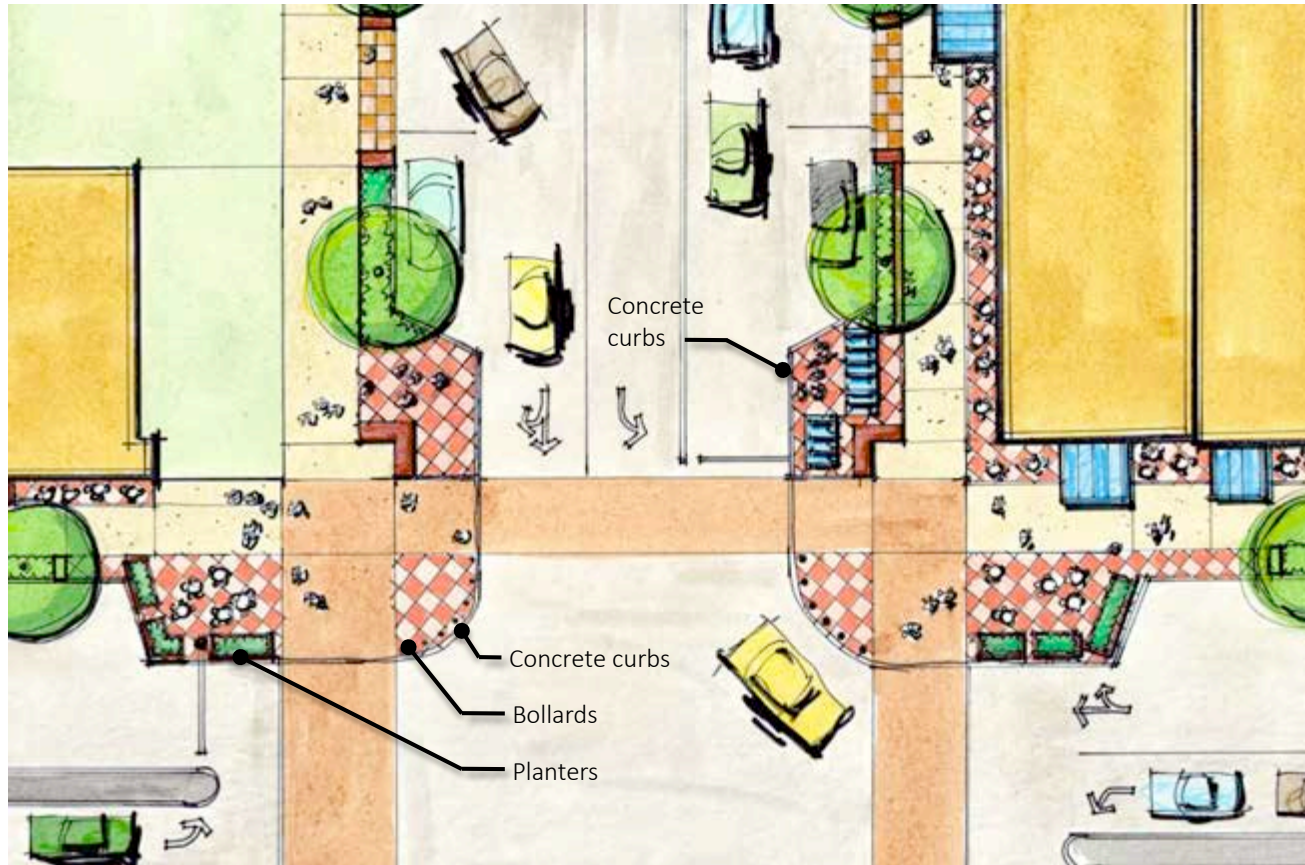
Curb Bump Outs:

Scope of work would include:

- Earthwork (demo / fill)
- New concrete curbs and sidewalk paving
- Safety bollards at edges
- Above ground planters

Existing corner @ Federal & North





3. TRAFFIC CALMING

Curb Bump Outs:

Scope of work would include:

- Earthwork (demo / fill)
- New concrete curbs and sidewalk paving
- Safety bollards at edges
- Above ground planters

Existing corner @ Federal & North



4. SIGNALIZATION

Scope of work would include:

- Upgraded mast arm and foundations
- Traffic Signals
- Software

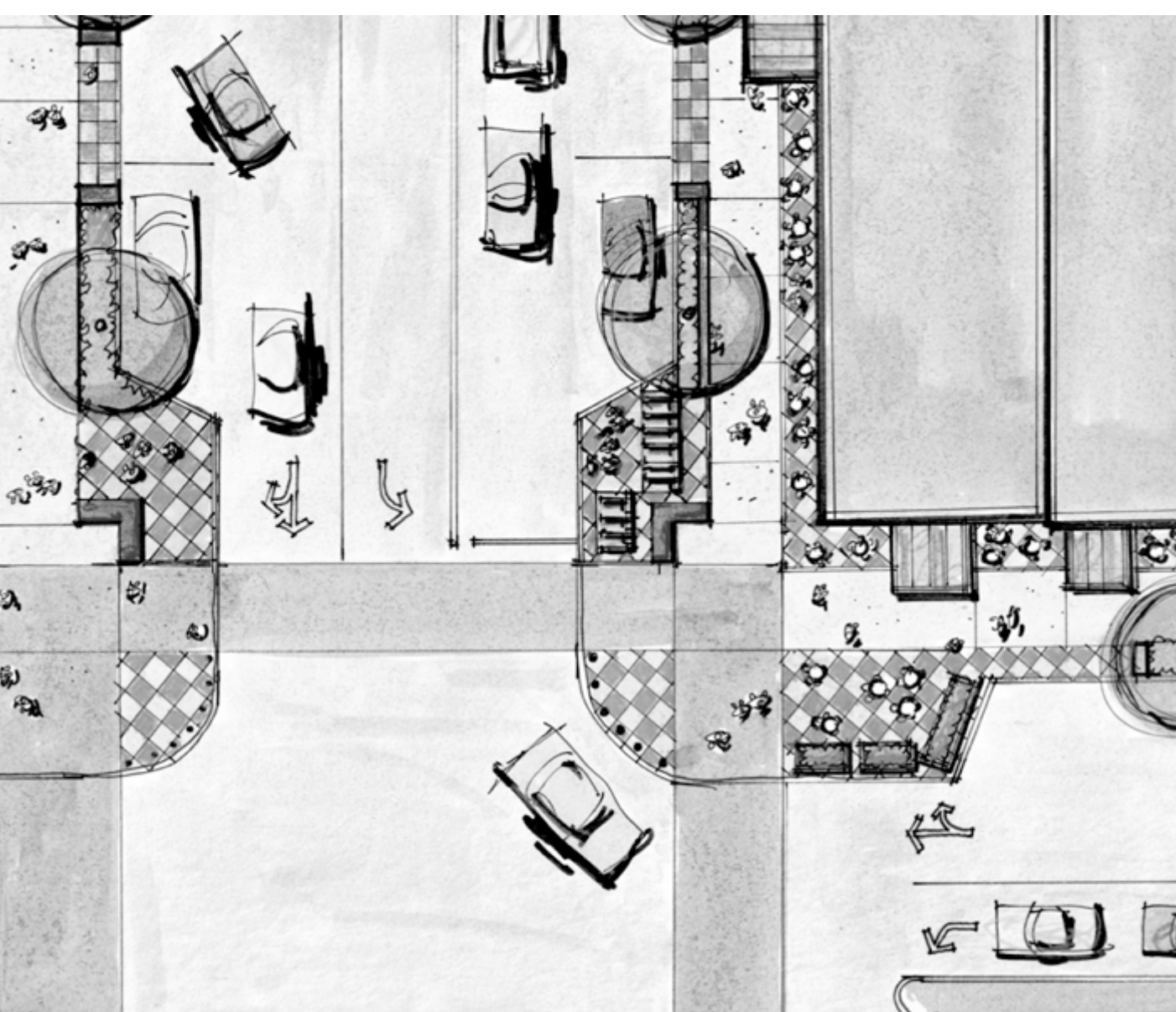
Significant place-making & transportation function. Land uses & architecturally significant buildings (The Garden) help to define the character. Serve as gateways and could be the first thing visitors see when they enter a neighborhood.

Existing corner @ Federal & North



4

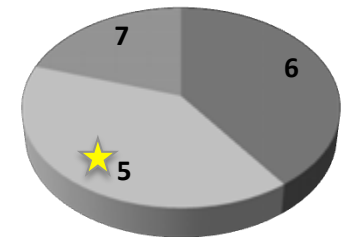




★ 5. SIDEWALKS – UPGRADED PAVING

6. RAISED POTS / PLANTERS

7. PLANTING BEDS



Priority results from Steering Committee



ZONING

Social Zone

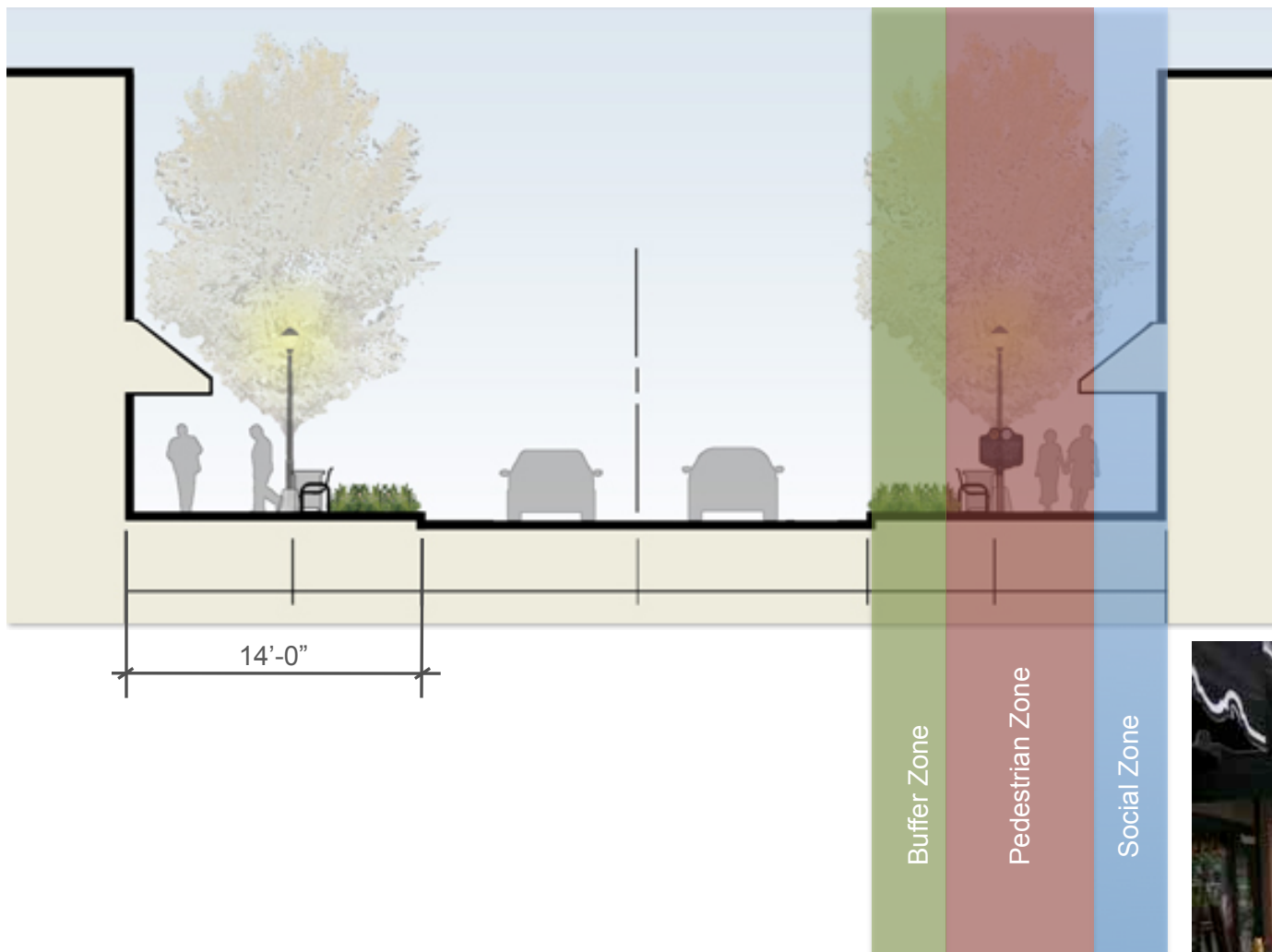
Building owners, awnings, tables chairs, planters, etc

Pedestrian Zone

Pedestrian travel zoning
Continuous paving
ADA ramps
Crosswalks
Underground utilities

Buffer Zone

Green space, street trees
Lighting
Signage
Parking access
Green infrastructure



★ 5. UPGRADE PAVING

Scope of work would include:

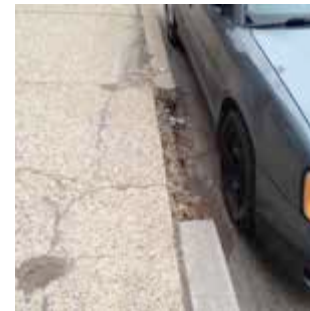
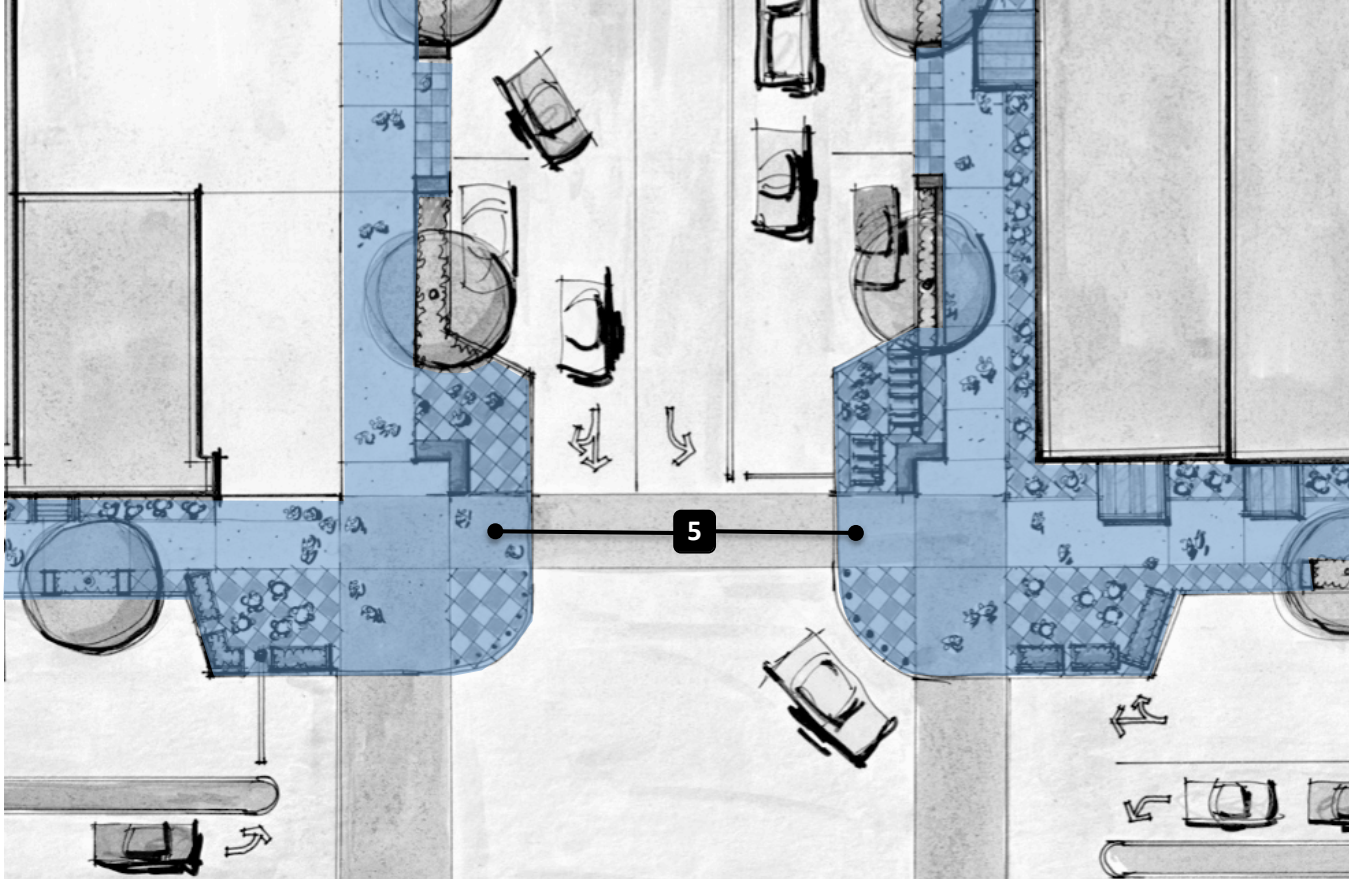
- Demolition of existing sidewalks
- New concrete curbs
- New concrete sidewalk
- (850 linear ft @ 14'-0" wide)

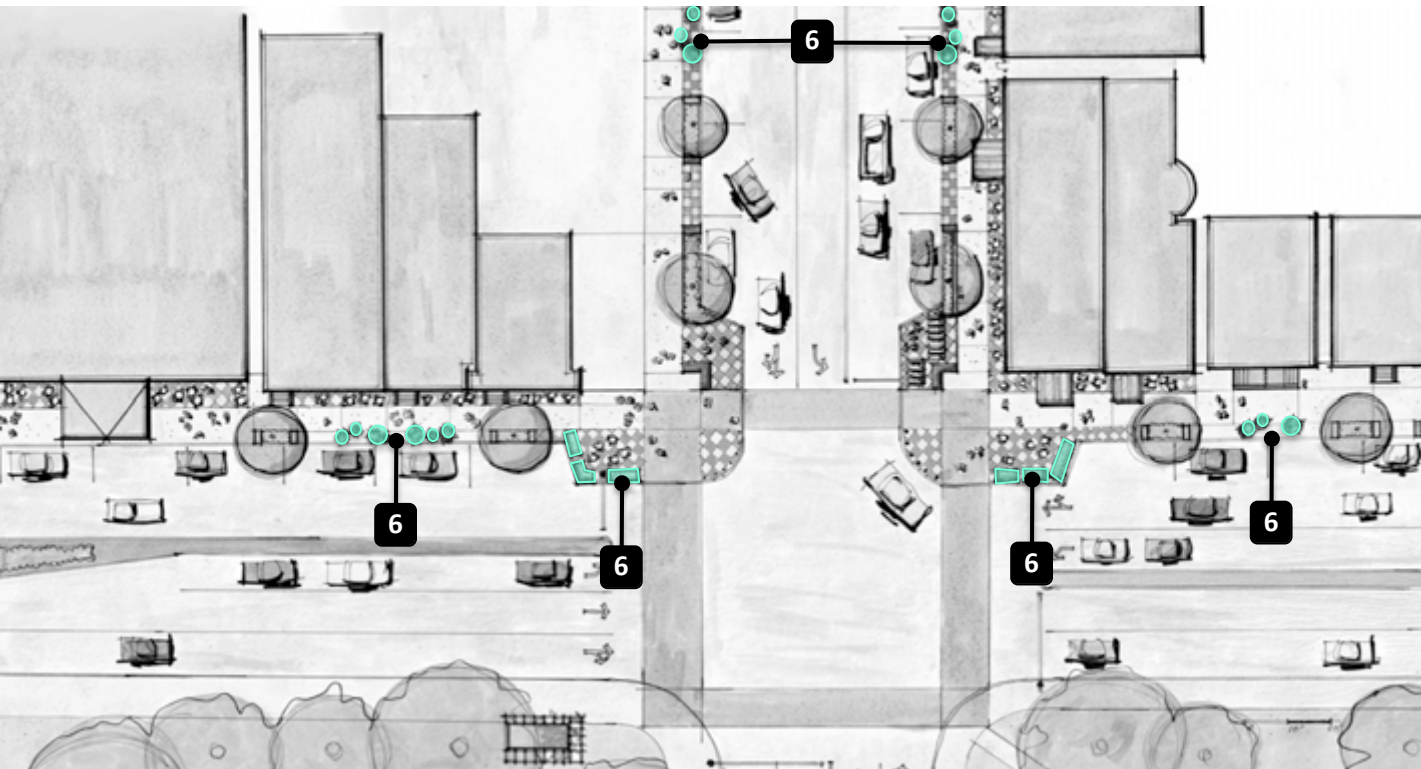
Sidewalk paving could utilize Concrete, Pavers, Terrazzo, etc.

Durability, Maintenance and Aesthetics should be taken into consideration for selection

★ Designates priority item

Existing typical sidewalks





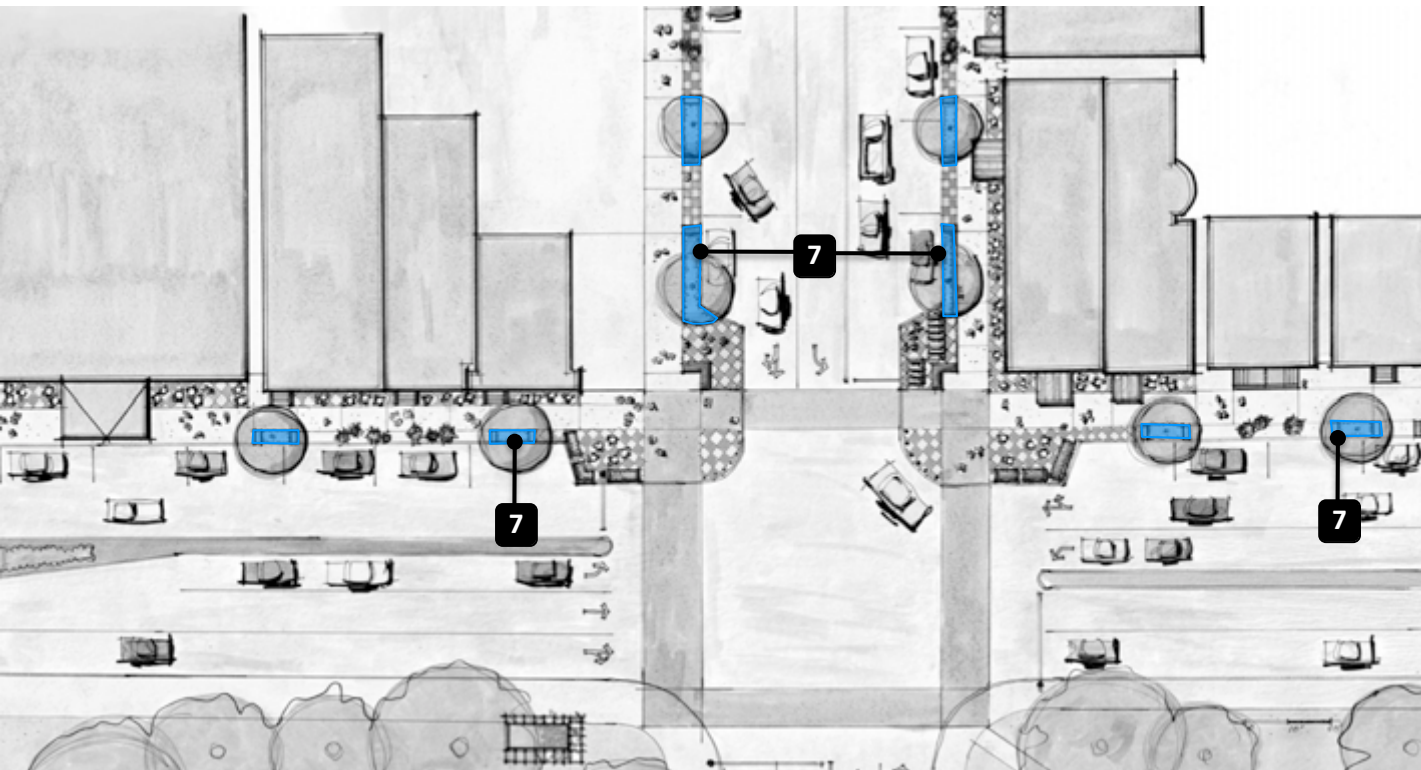
6. RAISED POTS / PLANTERS

Scope of work would include:

- Pots and Planters
- Topsoil
- First season of plantings

Fill the spaces of the streetscape with life, light, color, and texture and make a street a comfortable, interesting, and usable space for people.





7. PLANTING BEDS

Scope of work would include:

- Top soil
- Decorative curb fence
- First season of plantings
- Capture storm water in rain garden bio swale

Fill the spaces of the streetscape with life, light, color, and texture and make a street a comfortable, interesting, and usable space for people.

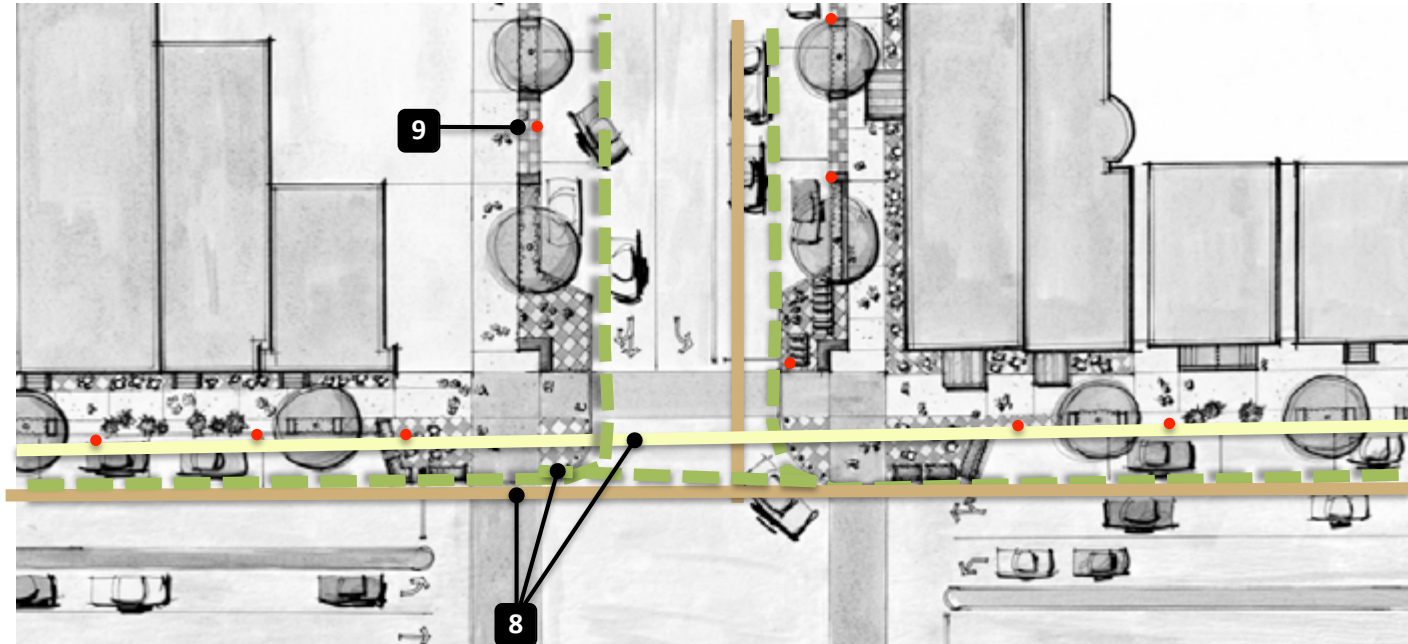












8. UNDERGROUND UTILITIES

Scope of work would include:

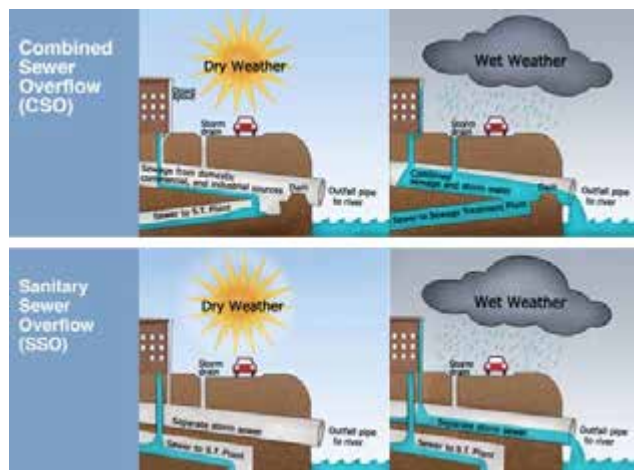
- Remove overhead power, telephone, communication, etc. lines.
- Install underground vaults and utilities
- Separate storm and sanitary sewer

★ 9. LIGHTING

Scope of work would include:

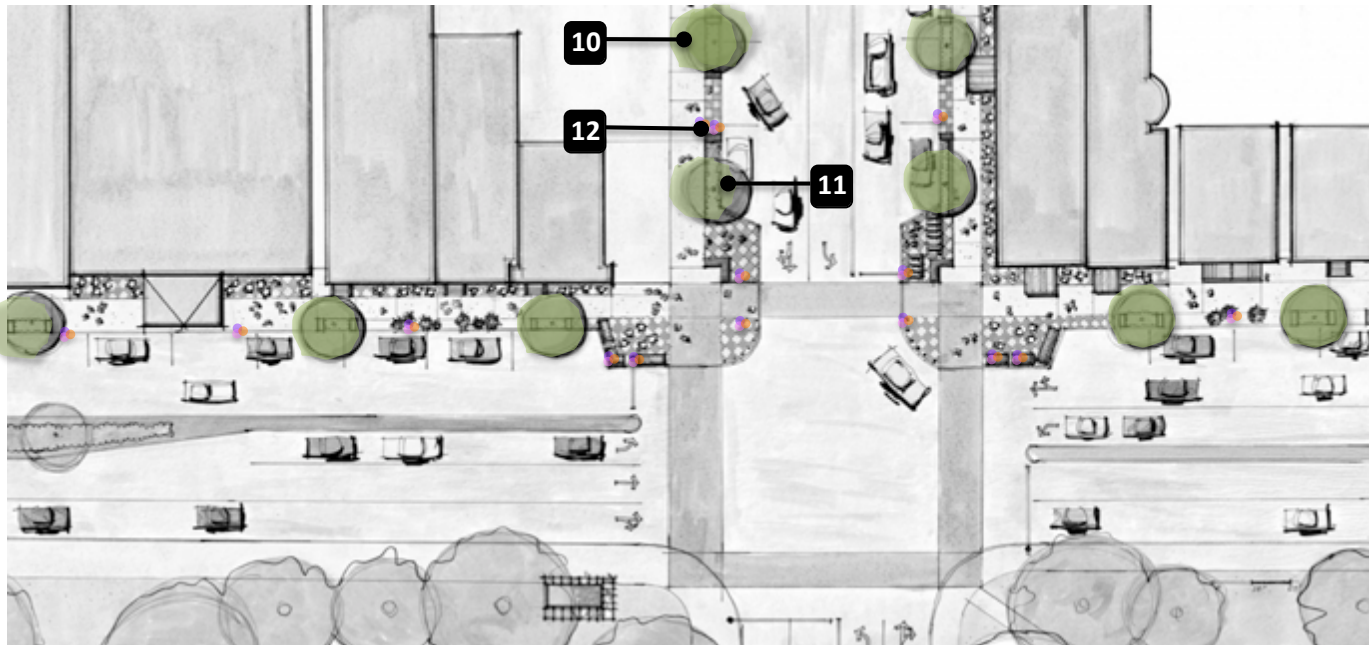
- Remove existing lighting
- Install new decorative lights (match upper lights on Federal Street)

★ Designates priority item



Existing lighting on Federal

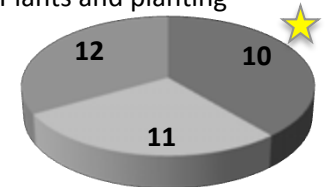




- ★ **10. STREET TREES & BIORETENTION**
- Scope of work would include:
- Trees with infiltration pits
 - Tree grates

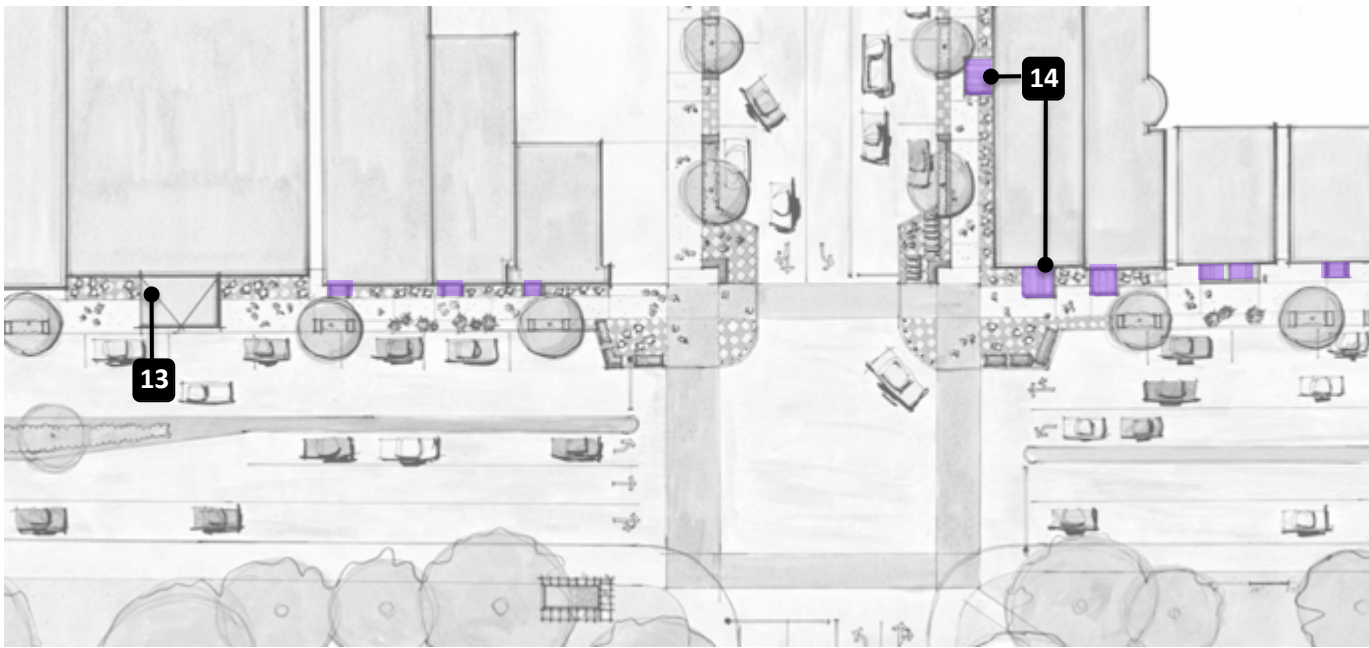
- 11. STORM BIO INFILTRATION & COLLECTORS**
- Scope of work would include:
- Infiltration material
 - Trench drains & curb cuts
 - Plants and planting

- 12. FLOWER BASKETS**
- Scope of work would include:
- Baskets and brackets
 - Plants and planting



Priority results from Steering Committee





13. UPDATE FACADES

Scope of work would include:

- Per individual owner
- Possible grant assistance

★ 14. AWNINGS

Scope of work would include:

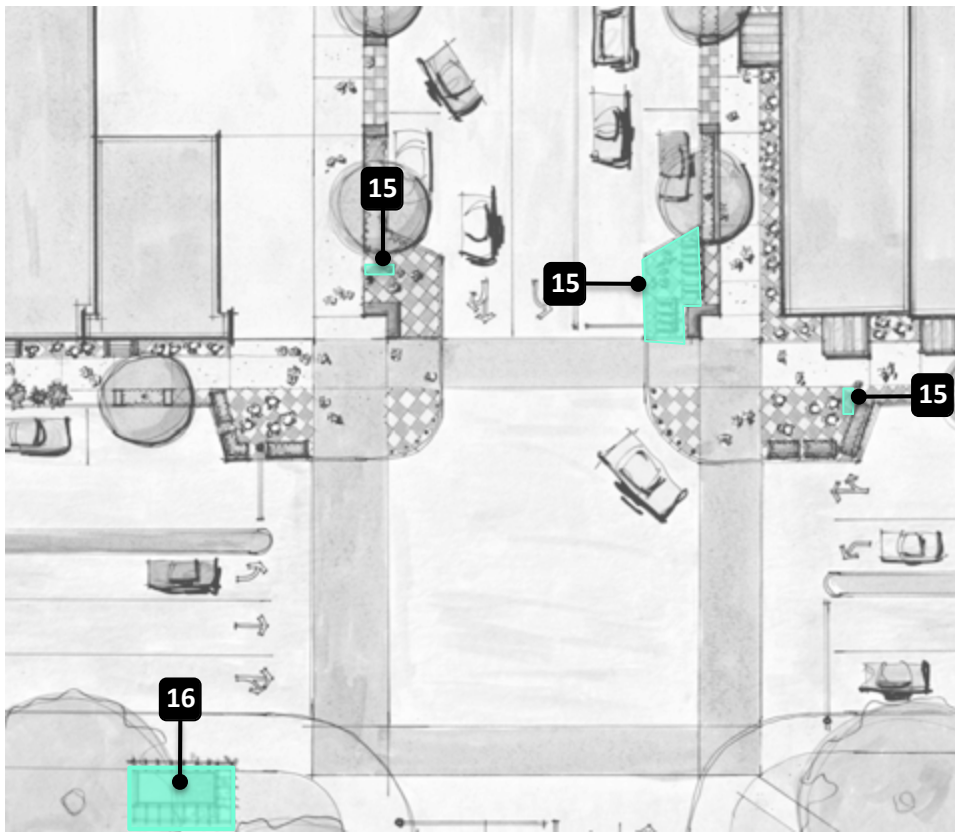
- Per individual owner
- Possible grant assistance

The revitalization often begins with improvements to a single building or storefront. Simple changes - removal of non-historic materials, repairs, or new paint will call attention to the building's original architectural details; a signal positive change - often stimulate similar improvements in neighboring buildings.



Priority results from Steering Committee





★ 15. BIKE RACKS & BIKE SHARE LOCATION

Scope of work would include:

- Bike Share location
- Requires the space of two parking spots

16. BIKE / BUS STOP GREENING STATION

Scope of work would include:

- Physical built structure

★ Priority results from Steering Committee



Existing bus stop shelter @ North Ave

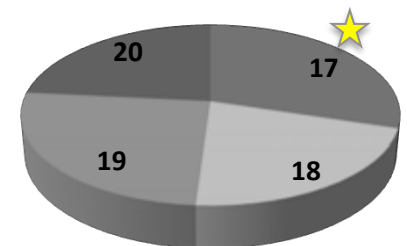


★ 17. ART CROSSWALK

18. WAYFINDING & SIGNAGE

19. STOOPS

20. VACANT LOT FENCING



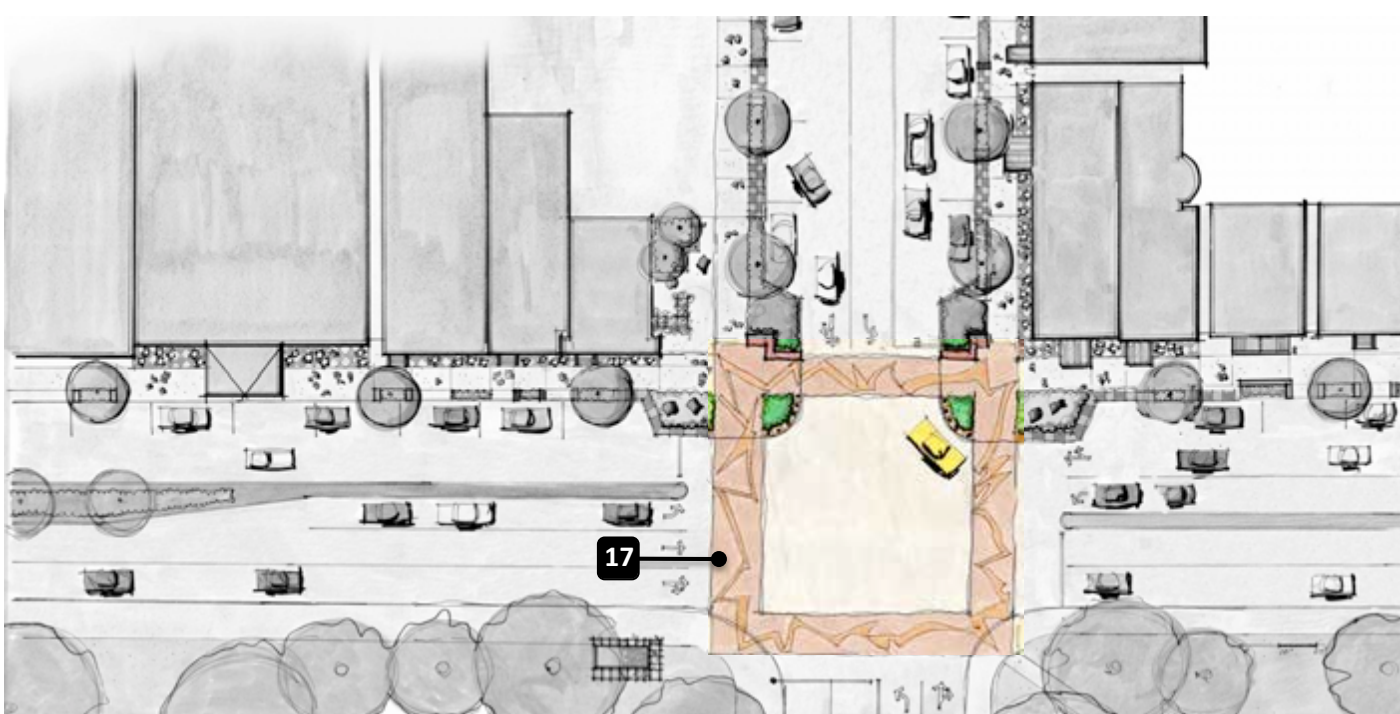
Priority results from Steering Committee

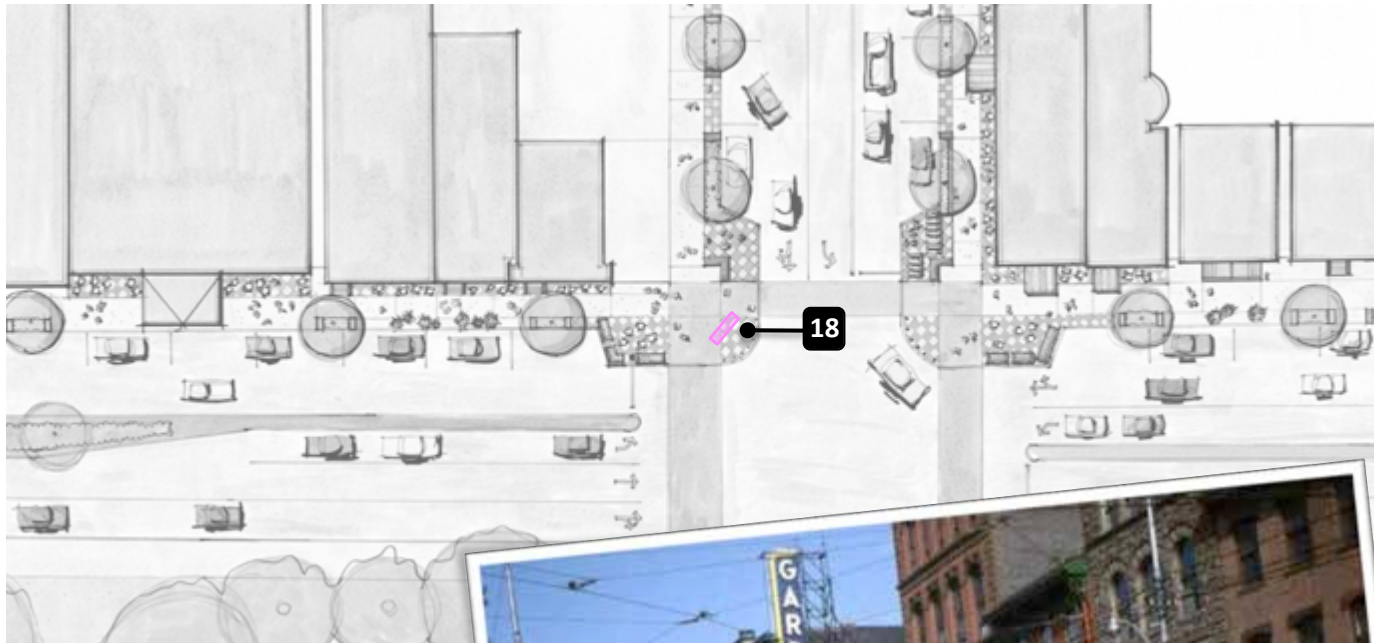


★ 17. ART CROSSWALK

Allow the crosswalks to represent the creative / cultural aspect of the neighborhood

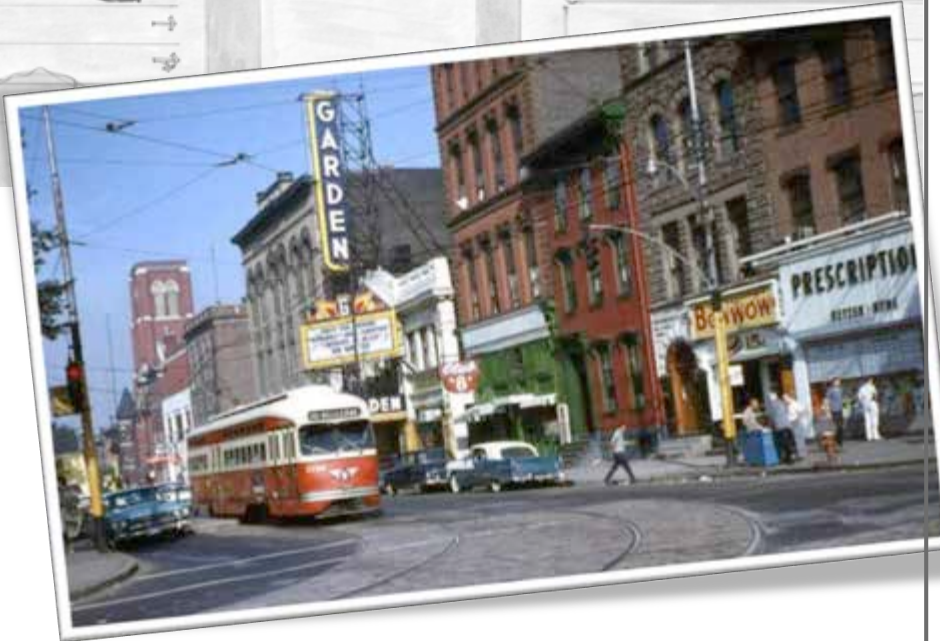
- Could be seasonal
- Establish a street event where local artist work on the new installation while the community celebrates





18. WAYFINDING & SIGNAGE

- Improve economic viability
- Help visitors find destinations
- Encourage increased dwell time
- Bring pedestrians businesses
- Memorable, safe experience
- Welcoming
- Establish connectivity

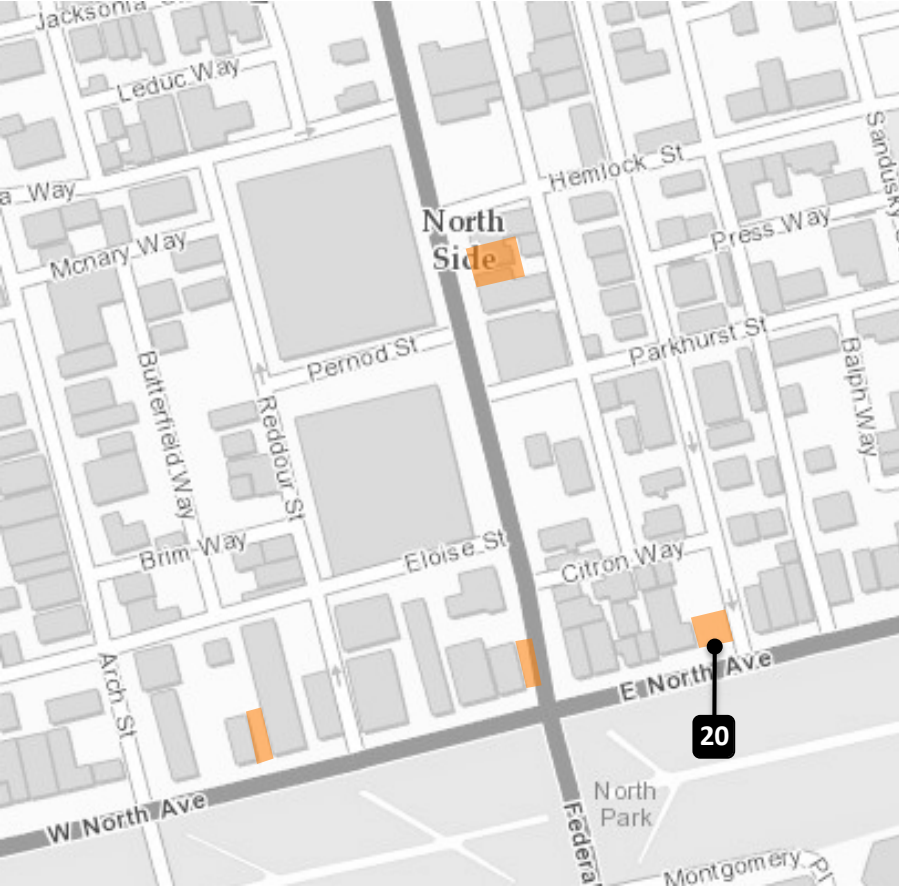




19. STOOPS

Creative strategy and approach that enhances the lot boundary to demonstrate that vitality and activity is happening in the neighborhood.





20. VACANT LOT FENCING

Creative strategy and approach that enhances the lot boundary to demonstrate that vitality and activity is happening in the neighborhood.



Lot on North Ave

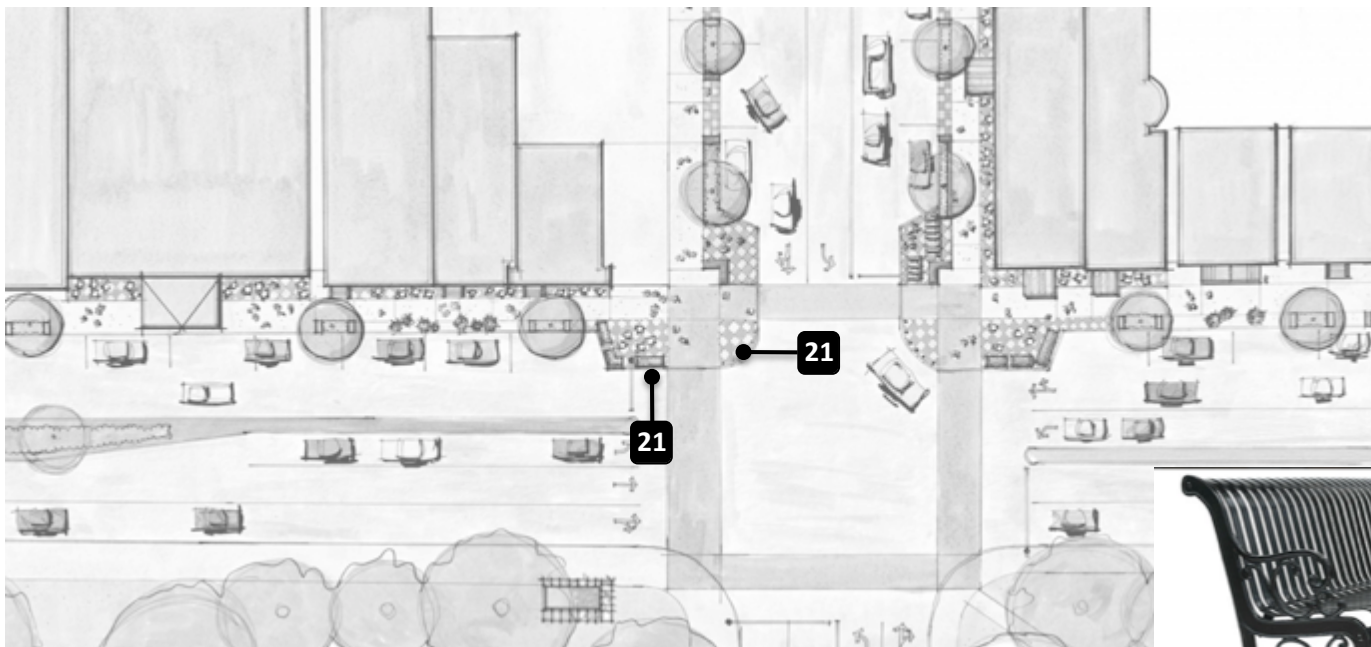


Lot on Federal St



21. SITE FURNITURE – BUILT-IN

Scope of work would include:
Items that are permanently fixed into the sidewalks. These would include fences, benches, planters, trash receptacles, bollards, etc.





22. SITE FURNITURE – BY BUILDING OWNERS

Scope of work would include:
Loose furniture items such as tables, chairs, umbrellas, decorative plantings/pots

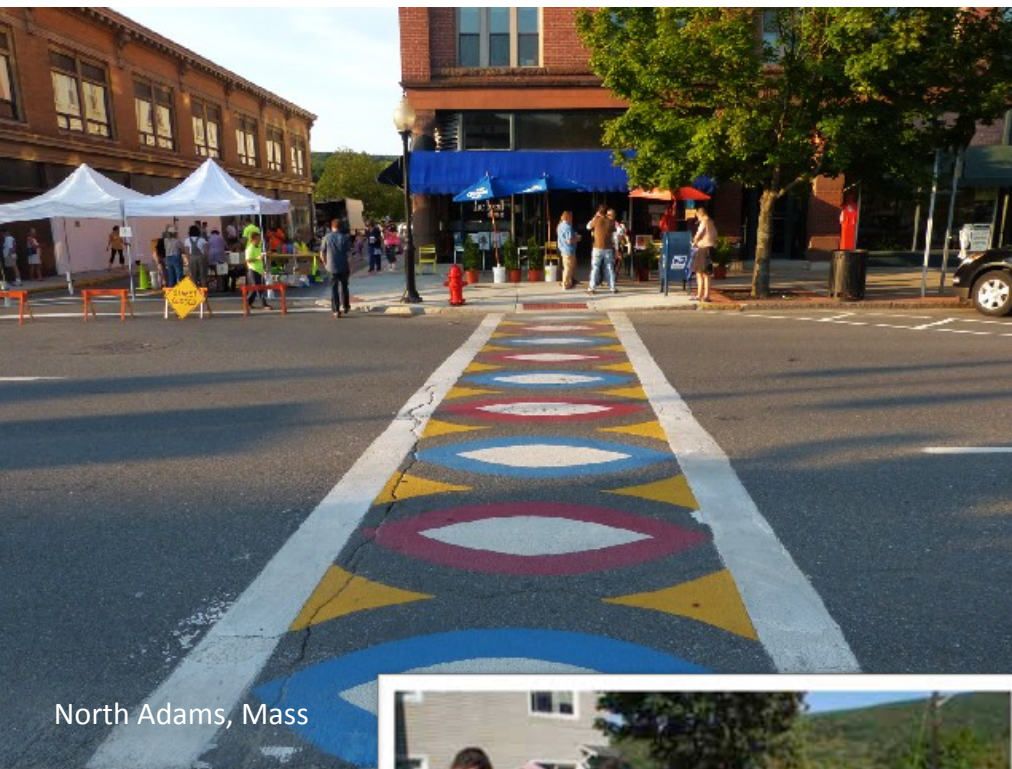




Agueda, Portugal



State College, PA



North Adams, Mass



Berkshires.com 2011 / Stephanie Farrington



Baltimore, MD

Hopscotch Crosswalk Colossus, it's one of four projects that will eventually turn regular crosswalks in downtown Baltimore into whimsical works of art



Grand Prize winner of the Place from Space Design Competition



**we are transforming
this parking lot
into a performance park**

We need your help!

July 12-13 | 8:30am-12:30pm Painting Party
July 19 | 8:30am-12:30pm Landscape Party
Aug 2 | 7-10pm Launch Party

RSVP at EventBrite: <http://ow.ly/xSLMJ>

Facebook: <https://www.facebook.com/renaissanc covington>

COVINGTON, KY



FROM ASPHALT TO ART:
COVINGTON PARKING LOT
NOW FULL OF COLOR.

New branding initiative
undertaken by Downtown
Covington to promote the
area as....
A CULTURAL DESTINATION
FOR ARTS AND MUSIC ...
known as Madland





INTERSECTIONS

- 1 Crossing zone
- 2 Crosswalks
- 3 Traffic Calming - Curb bump outs
- 4 Signalization

SIDEWALKS

- 5 Sidewalks - Upgraded paving
- 6 Raised pots / planters
- 7 Planting beds

INFRASTRUCTURE

- 8 Underground utilities & sewers
- 9 Lighting

GREEN INFRASTRUCTURE

- 10 Street trees & bioretention
- 11 Storm Bio infiltration & collectors
- 12 Flower baskets

BUILDINGS

- 13 Update facades
- 14 Awnings

BIKE / BUS RELATED ELEMENTS

- 15 Bike racks & bike share location
- 16 Bike / bus stop greening station

ART

- 17 Art crosswalk
- 18 Wayfinding & signage
- 19 Stoops
- 20 Vacant lot fencing

SITE FURNISHINGS

- 21 Site Furniture built-in
- 22 Site Furniture building owners



Master Plan – Allegheny City Central

MASTER PLAN ELEMENT & KEY LOCATION	
INTERSECTIONS	
1	Crossing zone
2	Crosswalks
3	Traffic Calming - Curb bump outs
4	Signalization
SIDEWALKS	
5	Sidewalks - Upgraded paving
6	Raised pots / planters
7	Planting beds
INFRASTRUCTURE	
8	Underground utilities & sewers
9	Lighting
GREEN INFRASTRUCTURE	
10	Street trees & bioretention
11	Storm Bio infiltration & collectors
12	Flower baskets
BUILDINGS	
13	Update facades
14	Awnings
BIKE / BUS RELATED ELEMENTS	
15	Bike racks & bike share location
16	Bike / bus stop greening station
ART	
17	Art crosswalk
18	Wayfinding & signage
19	Stoops
20	Vacant lot fencing
SITE FURNISHINGS	
21	Site Furniture built-in
22	Site Furniture by building owners

WHAT ARE YOUR PRIORITIES ?

- 1** Crosswalks
 - ☐ Curb bumps outs
 - ☐ Traffic signalization
- 2** Sidewalk upgrades
 - ☐ Pots, planters, planting
 - ☐ Street trees
 - ☐ Bike racks
- 3** Artful crosswalks
 - ☐ Site furniture by Owners

COMMENTS



Crosswalk



Curb Bump Outs



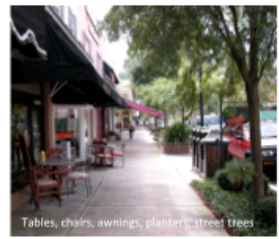
Signalization



Walks - Upgraded paving



Street Trees



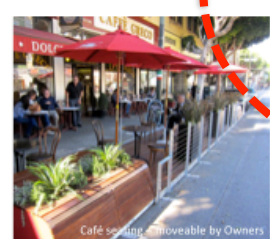
Tables, chairs, awnings, planters, street trees



Bike Racks



Art Crosswalks



Cafe seating, moveable by Owners

Master Plan Priorities



Table No#

ALLEGHENY CITY CENTRAL ASSOCIATION



Community Input



Design Consults

The Design Consults program provides educational materials, renovation resources, and affordable consultations to homeowners and small business owners planning property improvements. For a modest fee, a professional designer will help a property owner explore renovation options, understand the impact of their investments, and realize the value of preservation and design. By expanding property owners' understanding of design options, the Design Consults program encourages people to make well-informed investments that add value to their homes and neighborhoods.

The Design Center

