

# BRADBERRY GARDEN

**Newly Renovated Apartments Coming January 2018!!**



## Community Features

Close to the National Aviary & Children's Museum

Short Walk to Downtown Pittsburgh, PNC Park and Heinz Field

In Downtown's "Free Zone" for T-Station

Affordable Parking Options (Garage and Permit Area)



## Apartment Amenities

Spacious 1 & 2 Bedroom Options

Modern Apartments in a Historic Building

Elevator

In Residence Washer & Dryer



## Pet Policy

Pets Always Welcome!

Non-refundable Deposit: \$200; Monthly Rent \$35/ pet

Dog Breed Restrictions Apply

All pets are subject to Trek Management Approval

*A Project of:*

**TREK**  
DEVELOPMENT GROUP

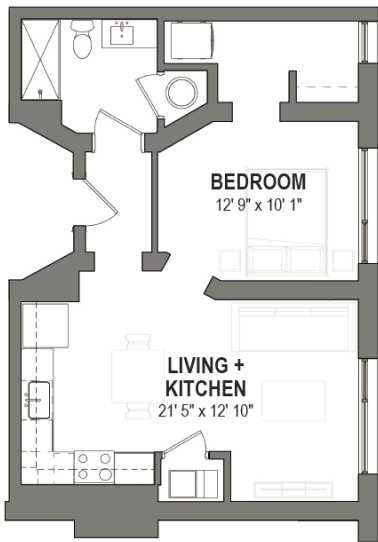


*Assistant Property Manager: Rachel DeVenney*

*412-688-7200 Extension 1013*

*www.gardenblock.com*

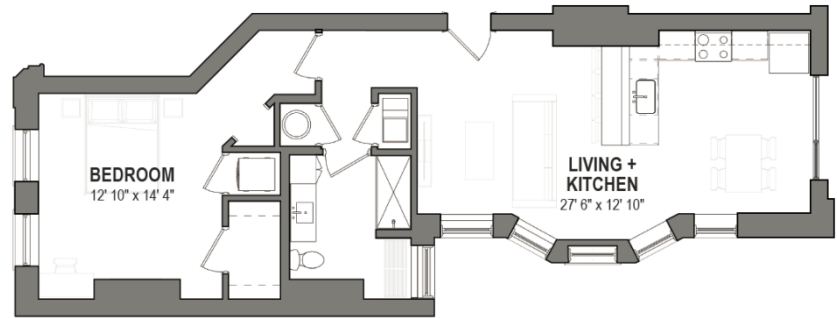
*1122 Reddour Street, Pittsburgh, PA 15212*



## THE LIGHTWELL

ONE BEDROOM / ONE BATH

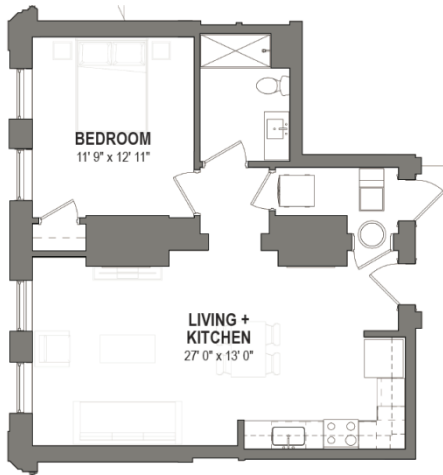
565 SF



## GRAND RAILROAD

ONE BEDROOM / ONE BATH

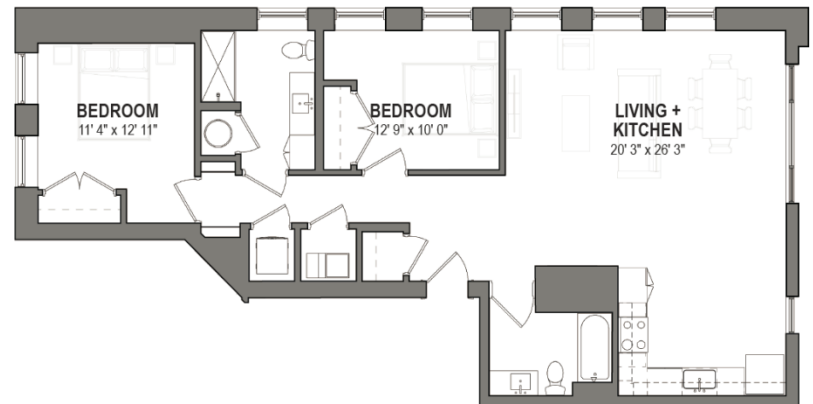
780 SF



## FOUR SQUARE

ONE BEDROOM / ONE BATH

660 SF



## CORNER COUPLE

TWO BEDROOM / TWO BATH

1065 SF